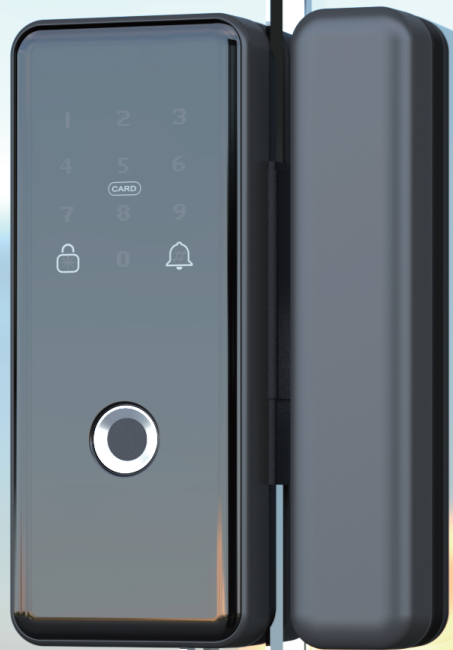


CLUTCH SERIES

Hole Free Glass Door Lock



More stable with clutch!

INSTRUCTION MANUAL OF CLUTCH HOOK GLASS DOOR LOCK

Introduction

The glass door fingerprint lock have been fully upgraded . With simple and elegant design,the double hook bolt and semiconductor fingerprint head makes the lock more safer. The dual motor protection mode of clutch and stepping motor makes the motor non-stuck.

Stylish appearance. The wide full-screen design, seamless touch screen display with personality, simplicity and three different colors make it refreshing.

Fingerprint recognition. The semiconductor fingerprint head recognition is not only sensitive and fast, but also can effectively prevent fingerprint copying, and with sensitive identification of wet and dry hands, elders and children.

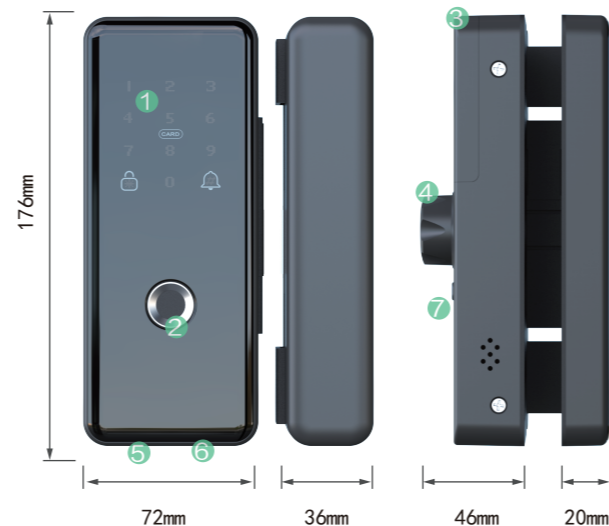
Double hook bolt .Unique design of 8mm double hook bolt can bear large resistance , and can be free of insert assembly.

Dual protection motor. With program + clutch design, the dual protection motor is with automatic control device,which effectively prevent motor from damage.And it makes the motor precise and powerful and work without sticking.

Unlocking mode. 6 unlocking designs – Fingerprint unlocking, password unlocking, magnetic card [ID card, bank card] unlocking, remote unlocking, Bluetooth unlocking, small program unlocking, wireless attendance.

Panel diagram

- 1 Digital touch keypad, IC card reader
- 2 Fingerprint reader
- 3 Batter cover
- 4 Manual switch
- 5 Mechanical key
- 6 Type-C USB power supply
- 7 Indoor switch button



Technical Specification

Identify fingerprint speed: $\leq 0.3s$
 False recognition rate: $\leq 0.0001\%$
 Fit frameless door gap: 3-15mm
 Fit door direction: easy to adjust between left and right
 Material: aluminum alloy
 Static power consumption: $< 10\mu a$
 Rejection rate: $\leq 0.0001\%$
 Fit door thickness: 8-12mm
 Color: matte black
 Fingerprint reader: Semiconductor biometrics
 Card type: 13.56mhz mifare card
 USB power supply: Type-C USB power
 Working temperature: $-20^{\circ}C \sim +60^{\circ}C$
 Weight: 2KG
 Suitable for door type: glass door, framed aluminum door, wooden door, sliding door;
 Unlock way: Fingerprint, password, IC card, wireless attendance (Optional: face recognition, remote controller, Tuya wifi)

Initialization instructions

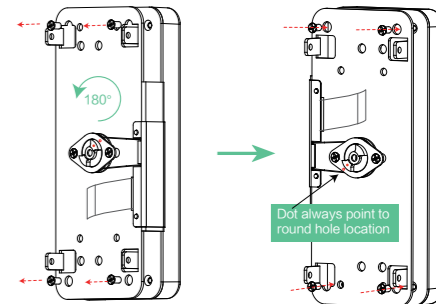


In the power-on state, press and hold the initialization button, and release it after the voice prompt "Clear successfully".

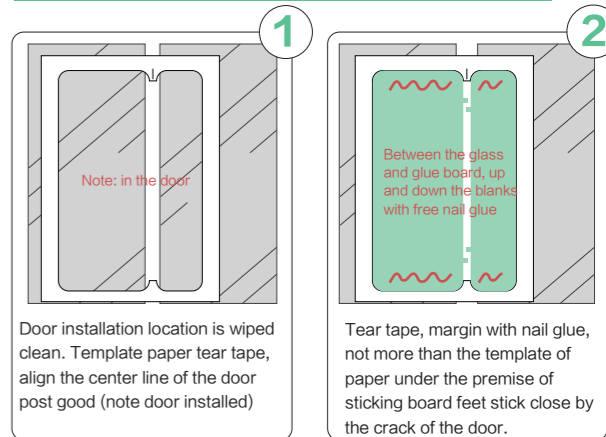
Note: In the initial state of the door lock, any fingerprint password can be unlocked. To prevent others from setting the unlocking information by mistake, please add the administrator password and fingerprint in time.

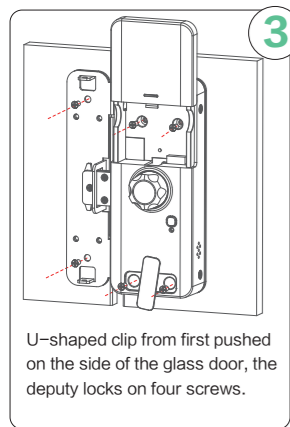
The reversing method of frameless glass door

Loosen the screw holding the front panel 4, u-shaped frame rotate 180°, confirm the dot mark alignment and then tighten the 4 screws. (note: ribbon cable replacement recently interface)

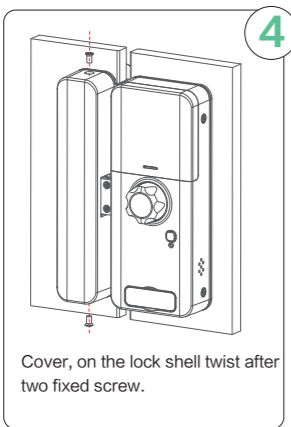


Frameless glass door installation



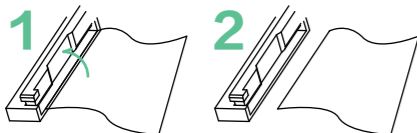


U-shaped clip from first pushed on the side of the glass door, the deputy locks on four screws.



Cover, on the lock shell twist after two fixed screw.

Flexible Flat Cable assembly and disassembly



Flip up the buckle, maximum 90°
Take out the cables

the metal sheet of the Cable need to face down

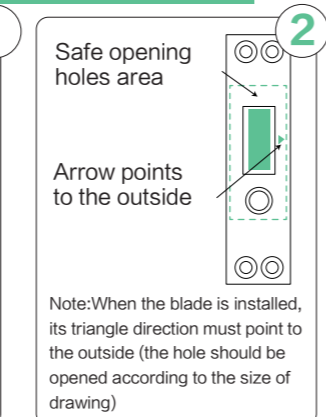
Note:

1. The template must be used for positioning the fixed plate. The door joint should not be less than or equal to 4 mm.
2. glass thickness 10-12 mm.

The installation of single opening door (blade)

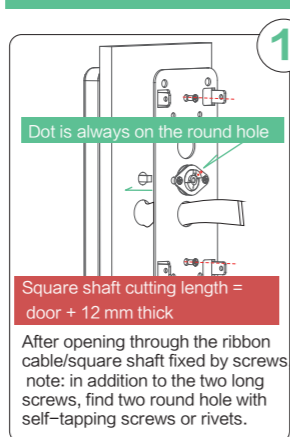


Install the main lock (the installation way is as above), and then when the door is closed naturally, screw out the lock bolt and make a mark.

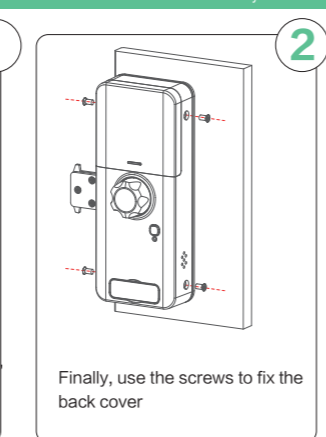


Note: When the blade is installed, its triangle direction must point to the outside (the hole should be opened according to the size of drawing)

Installation of framed door with holes such as wooden doors and aluminum alloys doors.



After opening through the ribbon cable/square shaft fixed by screws, note: in addition to the two long screws, find two round hole with self-tapping screws or rivets.



Finally, use the screws to fix the back cover

Function setting description

Any unlocking information can unlock the door under the initial situation.

password including 6-14 numbers, you can press # to end after you enter the password



Please touch to wake up the screen and then press #

Enter administrator verification

- (1) User Management
 - (1) Add users
 - (1) Add an administrative user: Enter the password, fingerprint, card or wireless device
 - (2) Add a normal user: Enter the password, fingerprint, card or wireless device
 - (2) Delete user: Enter password, fingerprint, card, wireless device or its number
 - (3) Clear user: Enter administrator verification
 - (4) Record query: Input #turn backwards, input * forward
- (2) System settings
 - (1) Set parameters
 - (1) Set the lock mode
 - (1) Set the automatic lock
 - (2) Set the manual lock
 - (2) Set the unlocking hold time: Enter the unlocking hold time (00-99)
 - (2) Adjust the volume
 - (1) Increase the volume
 - (2) Decrease the volume
 - (3) Switch wireless device
 - (1) Turn on the wireless device
 - (2) Turn off the wireless device (the remote control cannot be used)
 - (4) Adjust time
- (3) Chinese-English switching
 - (1) Chinese
 - (2) English

* is the return key
is the enter key