

Smart Lock

User Manual

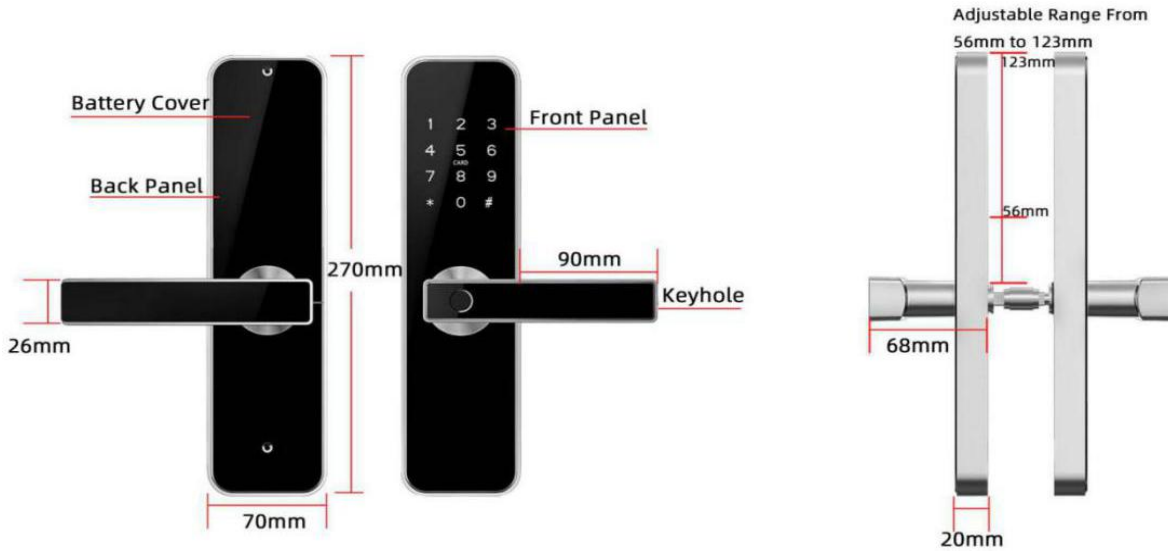


Special Attention:

1. Mechanical keys please keep outdoor, just in case keys lock in doors.
2. Please replace for the battery when low wattage alarm.
3. Reading this manual carefully before installation, and keep it for future reference.

1. Introduction

1.1.Lock structure



1.2.Packing List

💡 Check the following drawing to check whether the package contains all the parts

NO	Name	Qty	NO	Name	Qty
1	Front Pane	1	9	Sliding Screws:16*5mm	2
2	Back Panel	1	10	Mortise Screws:10*5 (For Aluminum Door)	4
3	Mortise:55*72	1	11	Mortise Screws:25*4mm (For Wooden Door)	4
4	Card	3	12	M5*20mm Screw for Door Thickness 35-50mm	1
5	Mechanical Key	2	13	M5*30mm Screw for Door Thickness 30-65mm	1
6	Waterproof Rubber Plate	2	14	M5*50mm Screw for Door Thickness 50-65mm	1
7	Screw Stubs:M5*30mm	2	15	User Manual	1
8	Strike&Strike Box	1+1	16	Chuck	1

1.3.Specifications

Suitable for Models	The Universal Lock	Doors Applicable	Aluminum door Wooden door
Materials	Handle: Zinc Alloy Panel: SS304	Working Voltage	6V/4x AA Batteries
Lock Weight	3KG	Door Thickness to Fit	35-65mm
Unlocking Way	Zigbee Fingerprint(option) Password Card Mechanical key Gateway(option)	Data Capacity	Fingerprint+Password+Card≤240 (Fingerprint≤100)
Color	Silver Black	Working Temperature	-10℃-55℃
Low Wattage Alarm	Less than 4.8V	Working Humidity	0-95%

Features:

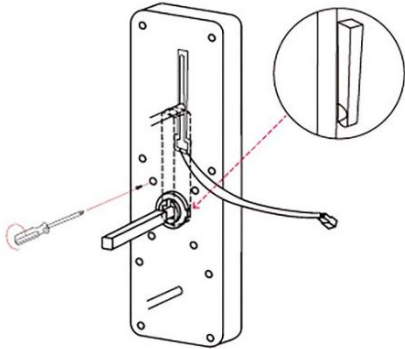
- ✓ Semiconductor fingerprint sensor(508dpi)
- ✓ Passage mode function
- ✓ LCD screen display Date & Time, User ID access & User unlock records
- ✓ Stainless steel handle
- ✓ Voice guided operation
- ✓ Auto secure & break-in alarm
- ✓ Voice setting function
- ✓ Auto locking time setting function
- ✓ Privacy locking
- ✓ Anti-theft Password
- ✓ Emergency power supply through USB

2.Installation

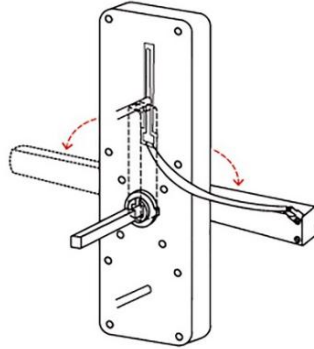
2.1Turn the handle

Notice: Adjust the handle according to the direction you open the door.

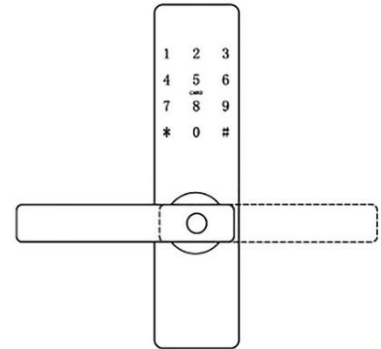
For Front Panel:



1.Loose Four Screws

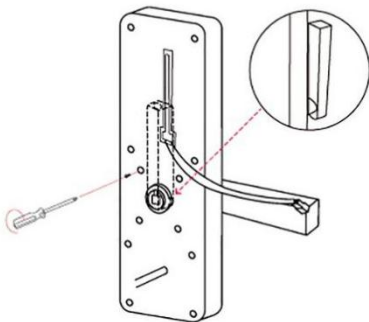


2.Left Open the Handle Toward the Left;
Right Open the Handle Toward the Right.

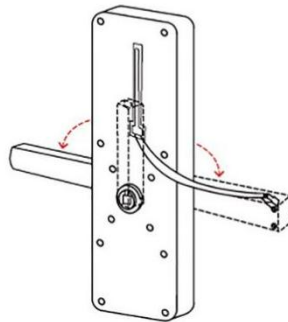


3.Reinstall the Screw After Adjusting the Direction

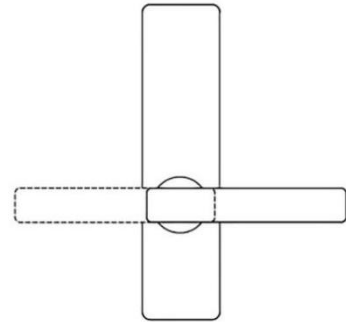
For Back Panel:



1.Loose Four Screws

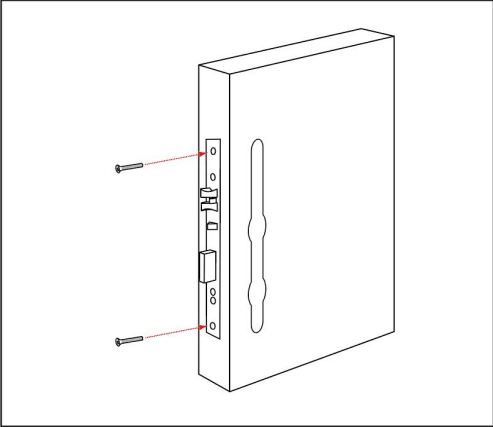
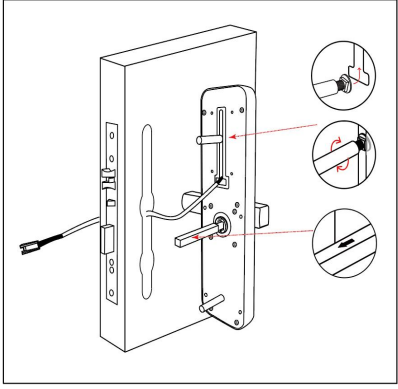
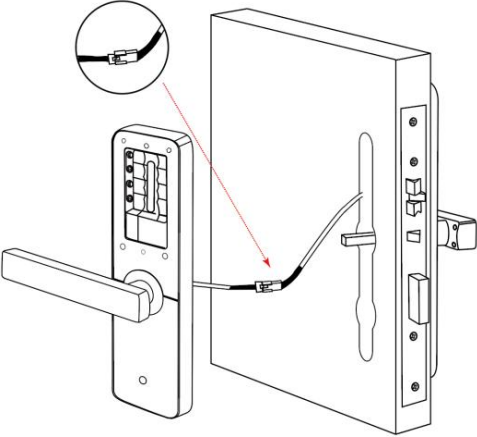
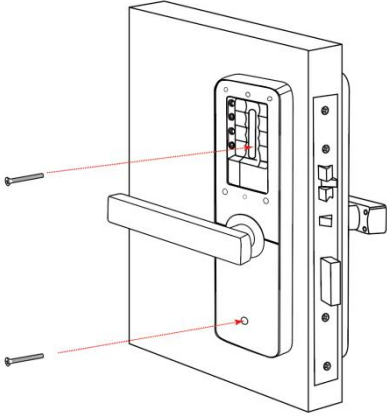
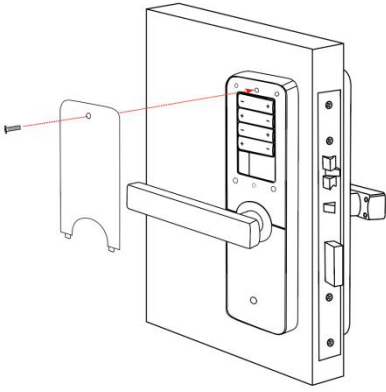


2.Left Open the Handle Toward the Left;
Right Open the Handle Toward the Right.



3.Reinstall the Screw After Adjusting the Direction

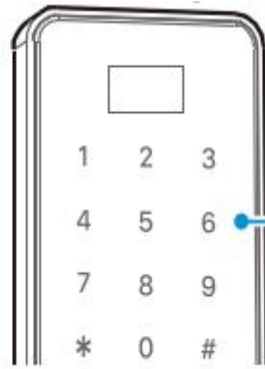
2.2. Installation Diagram(For 5572)

<p>Step 1 Install Mortise</p>	<p>Step 2 Install Sliding Screw Casing</p>
	 <p>1. The screw casing place is adjustable from 55mm to 100mm far from the square shaft.</p> <p>2. Depending on the location of the hole-drilling or the old door hole.</p> <p>Keep arrow direction (shows in image) always upward.</p>
<p>Step 3 Connect Front and Back Panels</p>	<p>Step 4 Install Back Panel</p>
	
<p>Step 5 Install the Battery</p>	
	

3.Operation

3.1.Number Pad

" 2 " : UP(↑)
 " 8 " : DOWN(↓)
 " * " : Cancel, Return,
 Exit and Delete
 " # " : Confirm and End



- 1#: set
- 2#: configure the network. 1.Net config
2.Net Remov
- 4#: Request remote lock picking
- 5#: Get a temporary password
- 6#: Time Updating
- 8#: updated

Passage mode: After verifying unlocking, press and hold "#" for 3 seconds and then prompt "the door is passage mode"

3.2.Operation and Management

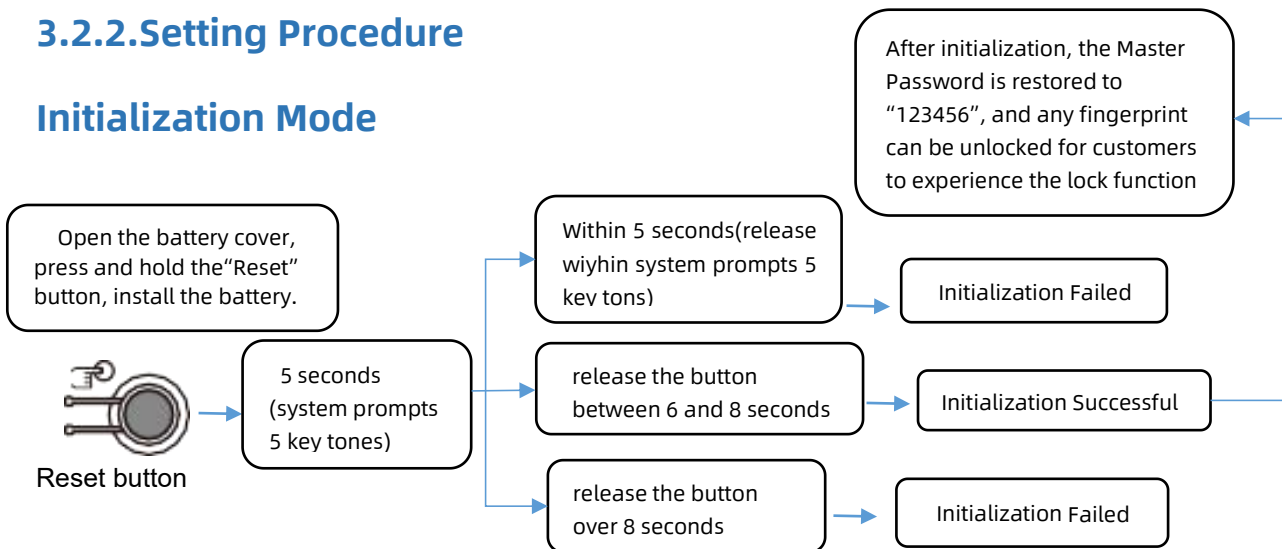
3.2.1.Fingerprint Registration

Place the unregistered fingerprint on the fingerprint detector according to voice prompt; Keep your finger stable;

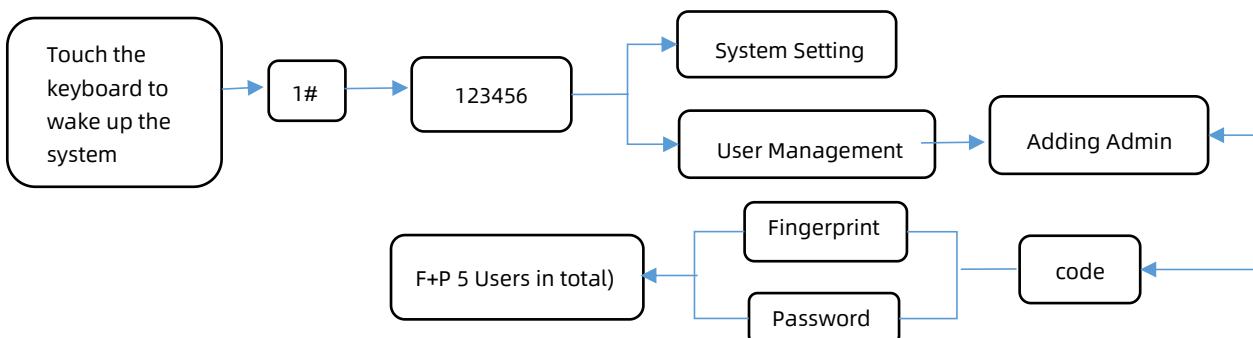
After successfully recording a fingerprint, then release your finger and place it again. After that, when placing the finger each time, move the position of the finger slightly up, down, left and right respectively and press it again until the voice prompt hints successfully recorded.

3.2.2.Setting Procedure

Initialization Mode

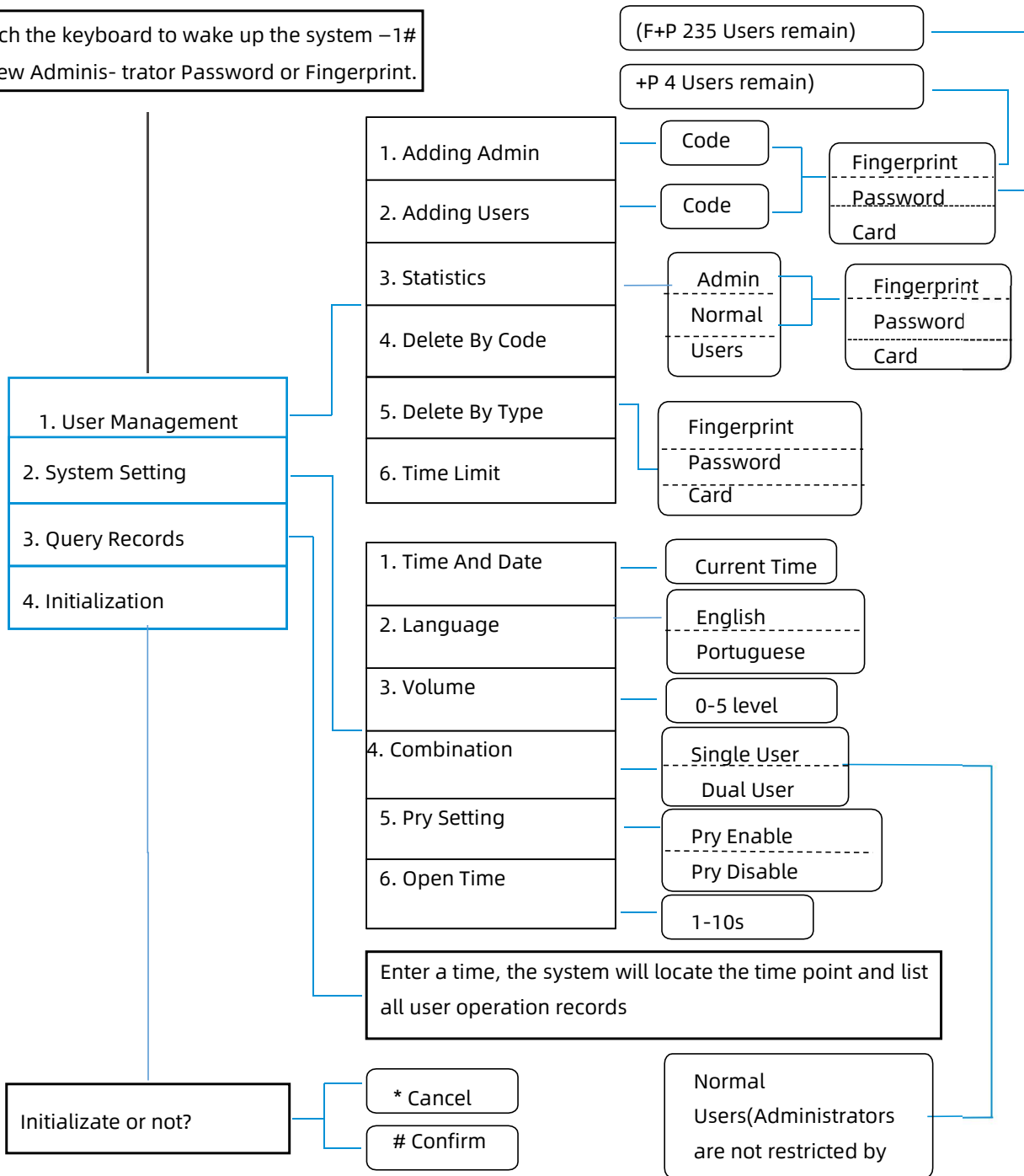


3.2.3.Adding Administrative Users



3.2.4. Setting Guide

Touch the keyboard to wake up the system –1#
 – New Adminis- trator Password or Fingerprint.



3.3. Electronic Locking Button



Press the electronic lock button, it prompts "lock" and the door lock has been locked. At this time, you can only pass the administrator's verification to unlock or press it again, and it prompts that the "unlock" electronic anti-lock function is closed.

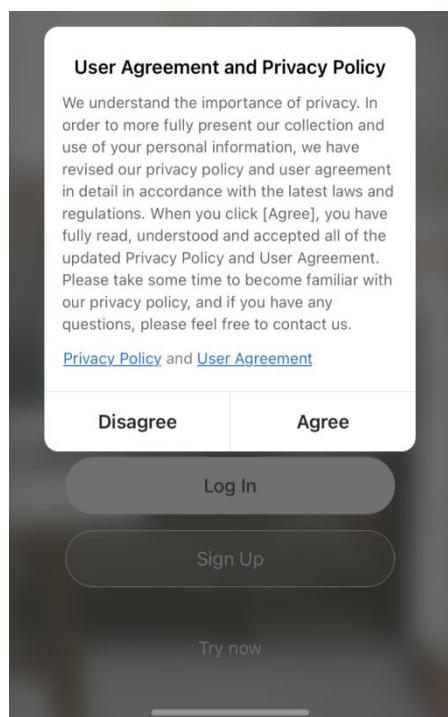
4. Add tuya smart app(optional)

4.1.Download



You can search for [TuyaSmart] in various app stores or scan the QR code above to download

4.2.Register



1.Click “Sign Up”and read the Privacy Policy after it pops up. Click “Agree” and enter the registration page.

2.You can use email or mobile number as your account to register. The country/region of the APP will be the same as the phone's. You can also change it by yourself when registering. (You cannot change the country/region after the registration). Enter mobile number/email and click”Get Verification Code”;

3.Enter the verification code and turn to the password setting page. Set your password as required and click “Done”.

4.3.Log in

If you already have an account,choose “Register with Existing Account”and enter the log in page.

1) .The system will automatically locate the current country/region you are in. Or you can choose the country/region by yourself.

2) .Enter mobile number/ email and password.

-Thirty-party Social Account Log in

If you have downloaded Wechat or QQ on your phone, you can click the Wechat/QQ icon in the log in page. You can log in using your wechat/QQ account after authorizing it.If you are using iPhone,you can also log in with Apple ID.

4.4.Using the APP

4.4.1. Add Lock

1. Tap Add Device on the Home page or + in the upper right corner of the page to go to the Add Device page.

2. Click the zigbee door lock in Security&Sensors , Choose add your zigbee gateway type, Added successfully

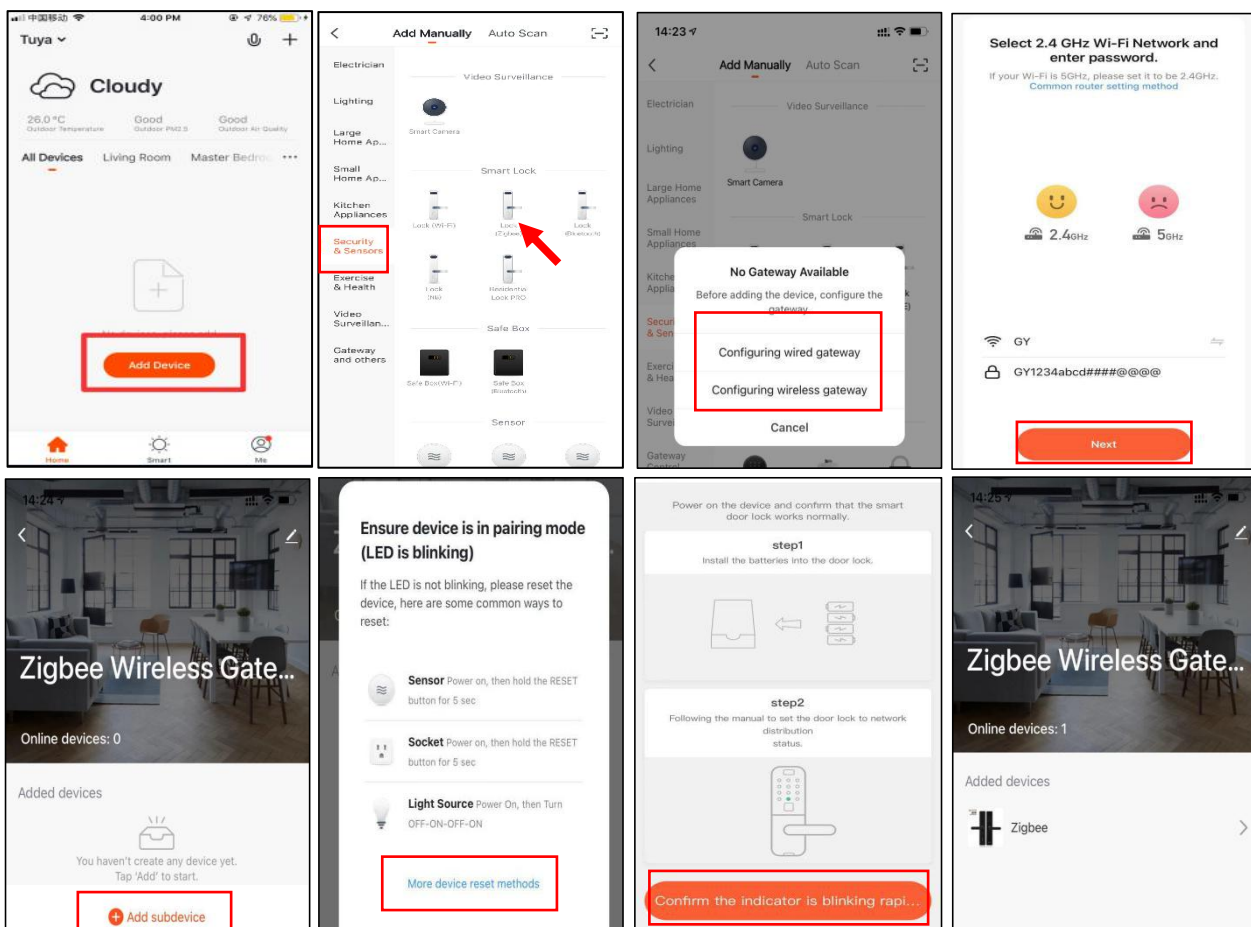
3. After the gateway is added successfully, enter the gateway page, click on "Add sub device", then select more device type. Find the door lock option

4. **Door Lock:** After pressing "2" + "#" to verify the administrator, press "1" to enter the Network config

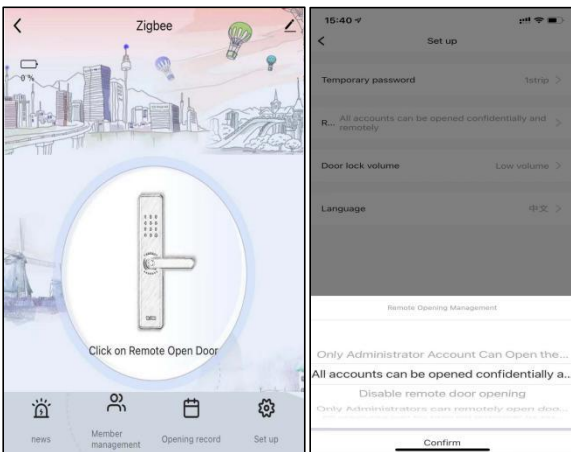
5. The "5" starts flashing, The screen is displayed in the network. **The mobile app continues the previous operation and enters the connection mode**

Attention: 1. You should be add admin first!!

2. If you want the door lock to have the network function, you must have the corresponding gateway

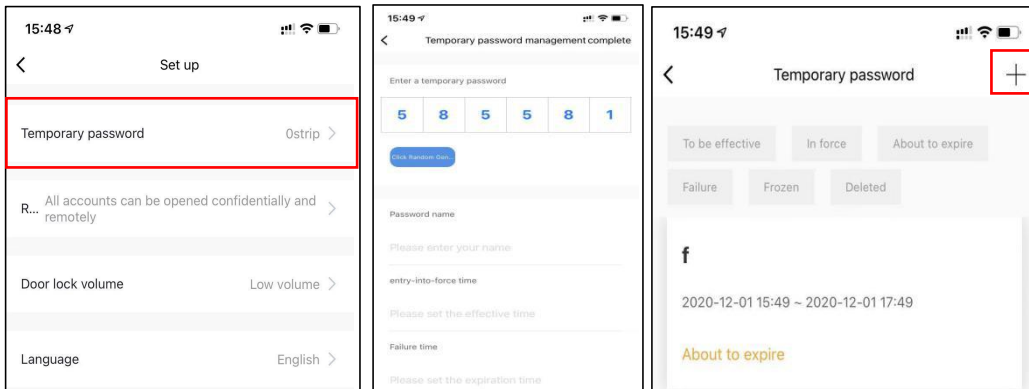


4.4.2. Remote unlock



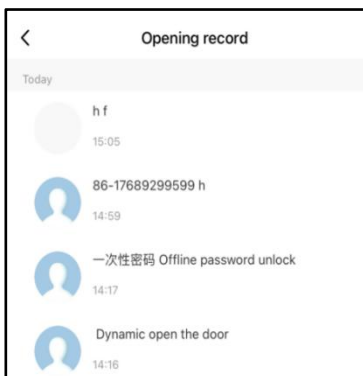
1. Enter the setting interface for remote door opening management, you can choose to open the door remotely with a password, or open the door without secret
2. On the main interface, click the remote open button to open the door without secret and confirm directly
3. The password can be used to open the door remotely. You need to enter the password information of the recorded door lock, respond to the virtual password, and use the generated temporary password to open

4.4.3. Temporary Password



1. Click the '+' sign to add a temporary password
2. Follow the prompts to fill in the temporary password information
3. After the password is issued, it can be used, and then click the entered password for secondary setting
4. The password can be frozen, unfreeze (after the freeze is issued, only unfreeze can continue to use), delete

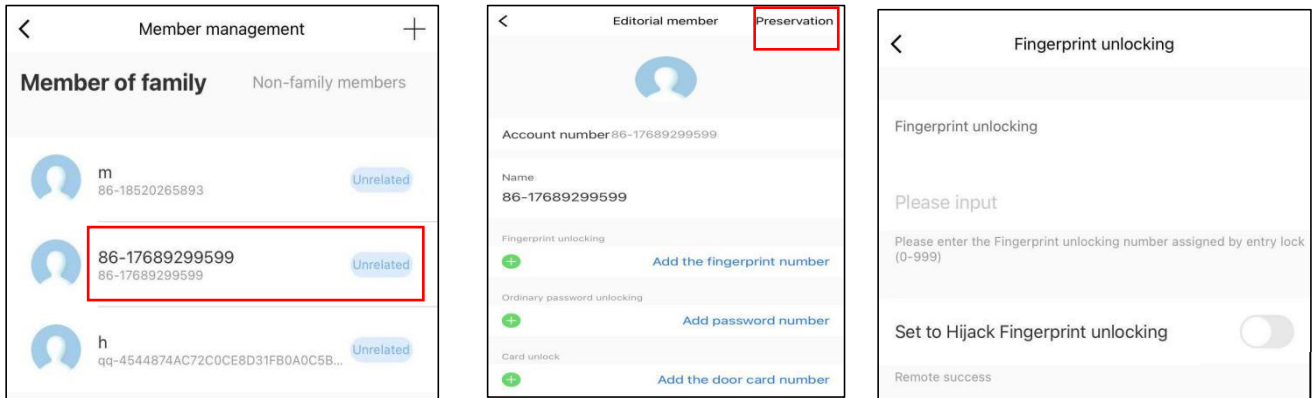
4.4.4. Opening record



You can query the log in the door opening log, and the records are arranged in reverse order. The unlock ID that has been associated with the user name will directly display the corresponding user name, and the unlock ID that has not been associated with the name will display the specific unlock ID

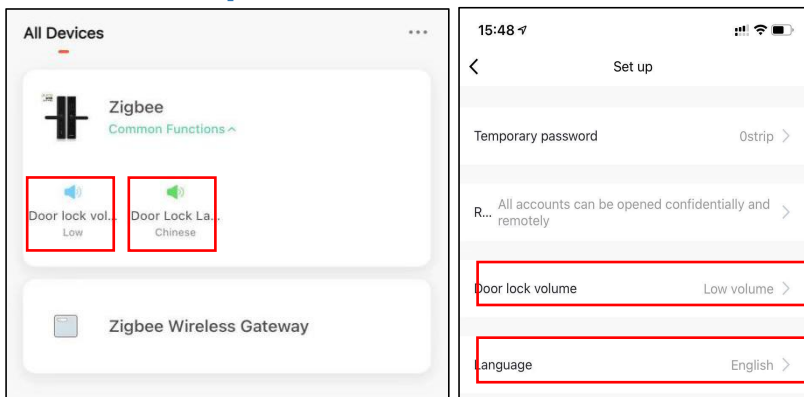
The door opening record will prompt in real time after networking

4.4.5. Member management



1. Select a member to edit, Can add fingerprint, password, card
2. Enter the information number entered on the door lock and bind it to the unlock ID of a certain user. When opening the door in this way, the door opening record directly displays the ID of the member

4.4.6. Set up



1. You can switch the language and volume of the door lock directly on the main page of the app, or click to enter the door lock settings to set

Note: 1. Press the doorbell button to upload the doorbell alarm.

2. But after we enter the password, fingerprint or card five times, we will enter the lock mode and report continuous verification errors

3. In the lock mode, the error will be re-reported once the continuous verification error

4. When the anti-pry button is pressed, an anti-pry alarm will be uploaded

5. When the lock is unlocked, the time will be checked, and the battery power will be detected and reported. If it is less than 30%, a low battery alarm will be reported

5. FAQ

1) How to read operation records?	In the Records of the main interface. .
2) Why can't I unlock it after open the passage mode	You need to perform an unlock verification in any method, than the passage mode will take effect.
3) What is the purpose of Auto Lock	You can set how long to lock after unlocking
4) After installation, touch sensing keyboard, screen no respond	<p>a) In this case, first check that the positive and negative electrodes of the battery have been installed upside down, whether the battery has enough power</p> <p>b) Remove the back panel and see if it's connected.</p> <p>c) To eliminate the above situation, you need to remove the lock ,check whether the wires of the lock body are squeezed, and the re-wire.</p>
5) Unable to register fingerprint	<p>Check the fingers for dirt or wear, check the fingerprint head on the lock for dirt and oil stains, etc.</p> <p>Check to see if the fingerprint is working properly(Press to see if there is any responds.</p>
6) What is the reason why the smart lock consumes fast power?	<p>a) Large standby power consumption</p> <p>b) Short circuit</p>
7) There is no response to pressing the handle on outside the door, and there is unlock normally on inside the door, but the verification is normal, and the motor is normal.	It may be the triangle direction on the clutch was error, please check correction.
8) How many times will the passcode be locked? How long is it locked?	Enter the wrong password more than 5 times in a row, the keyboard is locked for 90 secods

Guarantee

Customer Name: _____

Customer Calls : _____

Purchase Date : _____

Product Name : _____

Product Model : _____

Note:

- 1) Please keep this card so that you can use it when you need warranty service.
- 2) We provide you with a one-year warranty from the date of purchase.
- 3) This warranty service is valid for customers in any country in the world.